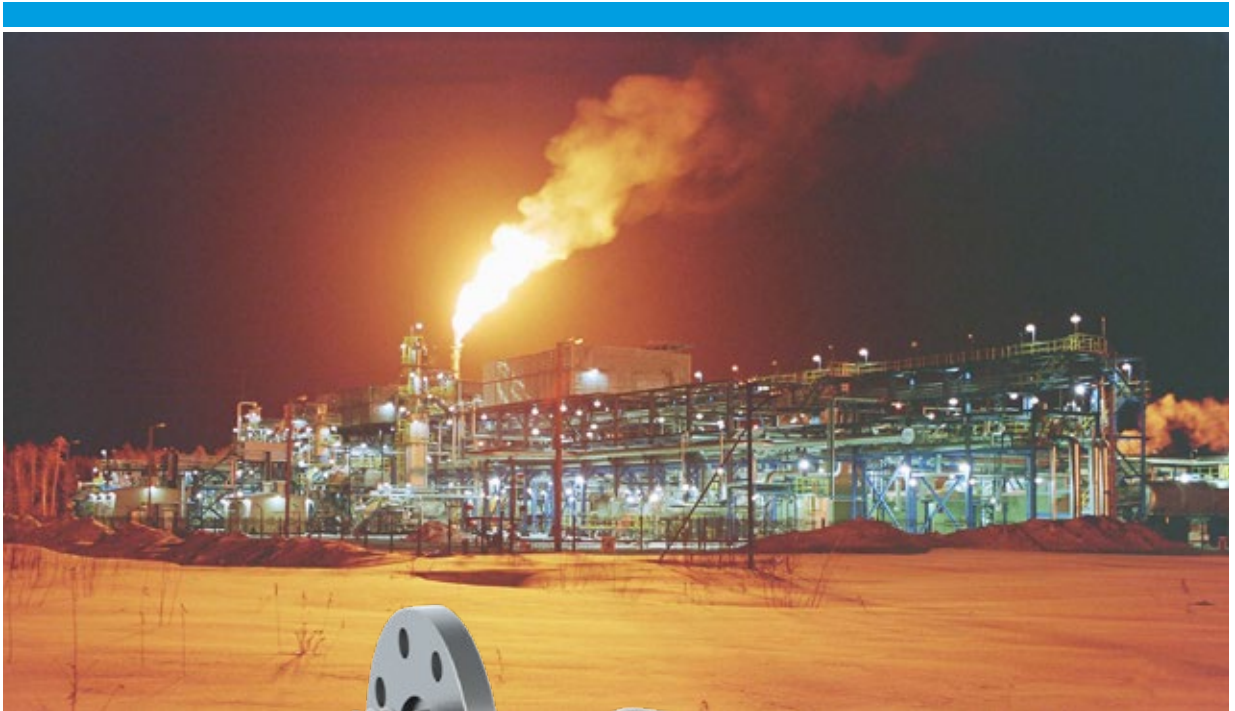


**EX-PROOF APPLICATION  
IN THE OIL & GAS INDUSTRY  
LUGINETSKY GAS COMPRESSOR STATION  
STREZHEVOY, WESTERN SIBERIA, RUSSIA**



# Trimod Besta

Level measurement A brand of Bachofen AG  
[www.trimodbesta.com](http://www.trimodbesta.com)



ClassNK



IEC 61508/61511

## Ex-proof Application

Natural gas is highly pressurized as it travels through an interstate pipeline. To ensure that the natural gas flowing through any pipeline remains pressurized, compression of this natural gas is required periodically along the pipe. This is accomplished by compressor stations, usually placed at 40 to 100 miles intervals along the pipeline. The natural gas enters the compressor station where it is compressed by a turbine.

In addition to compressing natural gas, compressor stations also usually contain some type of liquid separators, much like the ones used to dehydrate natural gas during process. Usually, these separators consist of scrubbers and filters that capture any liquids or other undesirable particles from the natural gas in the pipeline. Although natural gas in pipelines is considered «dry» gas, it is not uncommon for a certain amount of water and hydrocarbons to condense out of the gas stream while in transit. The liquid separators at compressor stations ensure that the natural gas in the pipeline is as pure as possible, and usually filters the gas prior to compression.

## Why Trimod Besta?

Bachofen can offer explosion proof switches from PN25 up to ANSI cl.900 in totally stainless steel design for liquids with very low density.

The switches can withstand the extremely harsh conditions in Siberia which means ambient temperature of +36°C during summer to and -55°C in wintertime.

## Ex-Approval

PTB 03 ATEX 1006



## Requirement for level switches

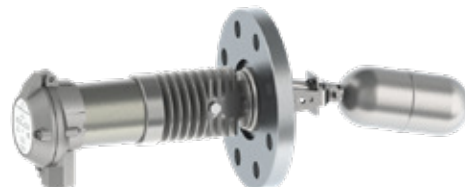
- Operating pressure up to 100 bar
- Operating temperature up to 380°C
- Explosion proof instruments
- Min. density: 0.4 kg/dm<sup>3</sup>
- All stainless steel version



Standard range version (square flange)  
Picture shows a similar switch to Z54K8 01 07

## Installed level switch types

- |                   |                              |
|-------------------|------------------------------|
| ▪ Z54K8 01 07     | standard square flange PN 25 |
| ▪ Z54HK8 01 07    | standard square flange PN 25 |
| ▪ Z54K8 135RY 032 | ANSI 3", cl. 900             |
| ▪ Z54HK8 011Z 76  | standard round flange PN 25  |



Industrial range version (ANSI flange)  
Picture shows a similar switch